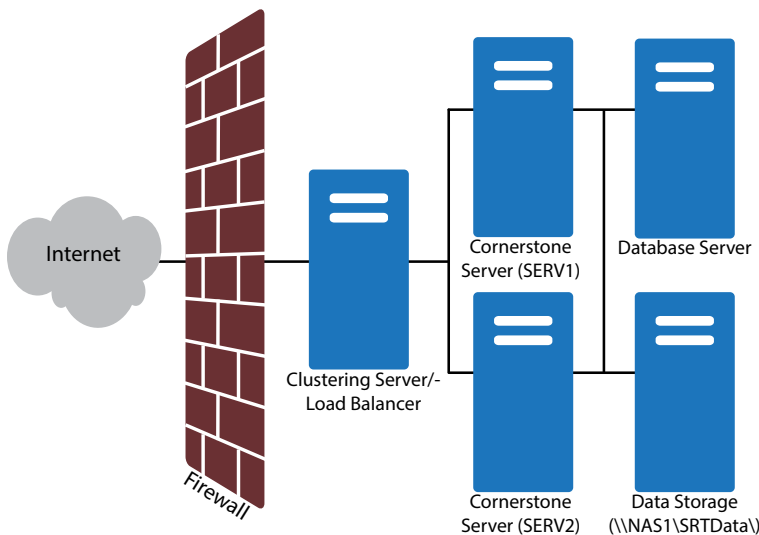




Cornerstone MFT Server High Availability and Failover



Your company can't afford server downtime. When server outages occur, whether planned or unplanned, the down time can result in lost revenue, lost productivity, and unhappy customers and partners. Every second slow-down in productivity equals dollars lost. You need to be sure that your business stays running even in the event of a hardware failure or when heavy traffic hits your site.

Cornerstone MFT offers high availability and failover to ensure that if one server goes offline, access to critical business data is uninterrupted. No downtime for you or your customers.

Cornerstone MFT Up-Time Features

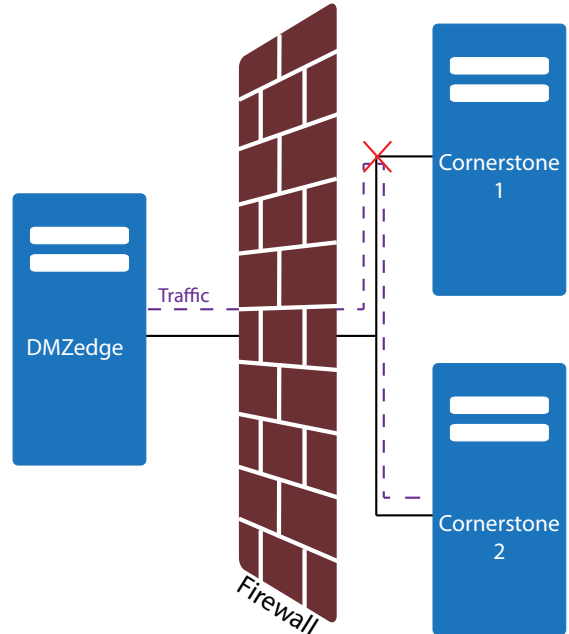
High Availability

Cornerstone MFT can be scaled and clustered to handle an unlimited number of users. The User Accounts Database can be stored remotely in an external SQLServer Database—or, in the case of Active Directory/LDAP-based user authentication, on an external server—which is accessible from multiple nodes. Employing an external database to store configuration and user account information creates a fully scalable system where multiple nodes share the workload and allow system maintenance without creating user access limitations.

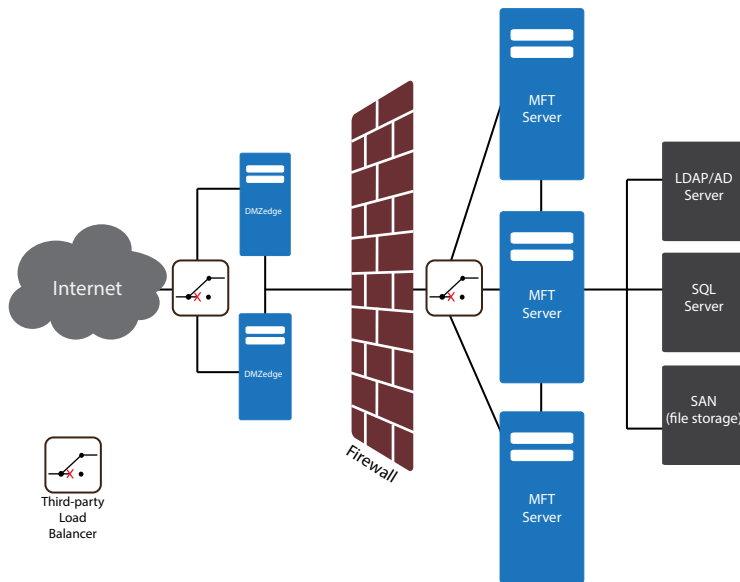
The network load balancer at the entrance to the Cornerstone cluster receives the incoming traffic and either parses out the load of visitors to the available servers or launches additional nodes to share the workload.

Failover

In a failover scenario, when one Cornerstone server goes offline for maintenance or hardware failure, the traffic is directed to the next Cornerstone server in the priority list. When the offline server is available again, traffic automatically routes back to spread the load and provide uninterrupted service.



In a failover scenario, when Cornerstone 1 goes offline, the traffic will be directed to the next Cornerstone in the priority list.



DMZedge

The Cornerstone server can also be used in conjunction with the DMZedge server to add perimeter security to the high availability configuration. The DMZedge server option provides airtight security by standing between out-of-network users and your firewall. Users never access the servers directly through the firewall. Instead, they connect to the DMZedge, and the Cornerstone servers dynamically open ports through the firewall to service requests from the DMZedge.

Each Cornerstone server can be configured to communicate with one or more DMZedge servers, eliminating the chance of single point of failure.

South River Technologies is an innovator in secure file management software. More than 90,000 customers in 140 countries use SRT's software to make remote file access and collaboration more efficient for their customers, partners, and workforce.



www.SouthRiverTech.com

South River Technologies, Cornerstone MFT Server, and WebDrive are registered trademarks of South River Technologies, Inc. in the U.S. and other countries.

Contact Information:

South River Technologies, Inc.
 Email: sales@southerivertech.com
 Toll-Free: 1-866-861-9483
 Main: 443-603-0290
 Fax: 410-266-1191