

Titan SFTP Server is the reliable, secure file transfer solution with the performance that businesses demand. Easy setup, precise configuration controls, and virtually unlimited scalability, Titan SFTP Server is designed to address your needs now and in the future.

## SECURITY AND ACCESS CONTROL

Titan SFTP Server permissions can be set at the user, group, or server level. Smart features like auto-banning users and IP addresses helps to avoid unauthorized access.

Helping you to be proactive about security, Titan SFTP Server provides rich configuration options to assure secure access, such as blocking FXP and anti-timeout measures. Notifications keep you informed about unusual activity and automation can shut down potential attacks instantly.

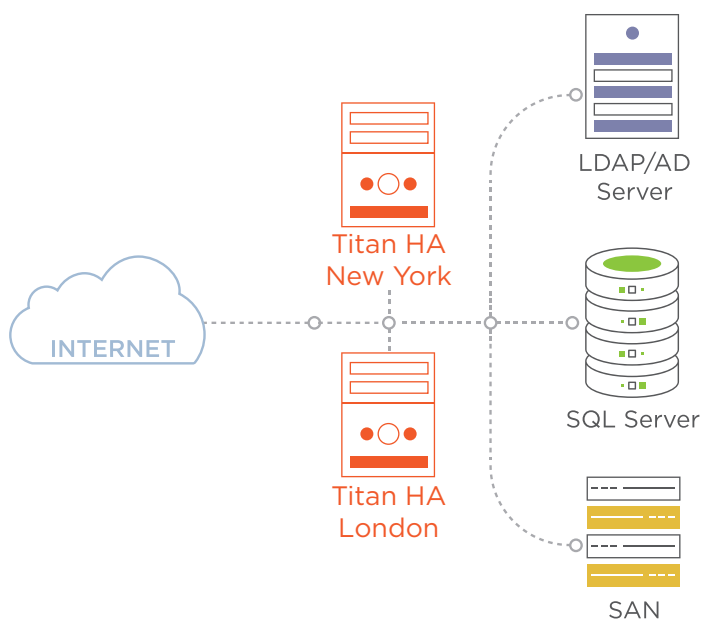
IP Address whitelisting or blacklisting, and banning of specific file types lets you manage interactions with your Titan SFTP Server. With its “security-first” design, Titan SFTP Server gives you confidence and control.

## KEY FEATURES

- TLS for secure transfers
- Password encryption
- SSH/SFTP support
- Web User interface
- Host Key support
- AD and LDAP support
- Clustering for HA and Failover

## SCALABILITY

Titan SFTP Server - HA lets you cluster 2 or more servers to support high availability and throughput.



### Failover

Active/Active or Active/Passive failover configurations are supported. Apply updates without disruption and eliminate downtime due to hardware issues.

### High Throughput

Multiple Titan HA servers can be clustered to handle large file transfer volumes. Used with a load balancer, a round-robin or a least-busy configuration distributes the workload across servers.

## CISCO RECOMMENDED

Cisco Systems recommends Titan SFTP Server as a preferred backup server for Cisco Unified Communications Suite. Titan SFTP Server is certified through the Cisco Technology Developer Partner Program (CTDP) to work seamlessly with CUCM to ensure secure backup procedures. Titan SFTP Server is the secure, reliable solution that makes CUCM backup an easy, set-it-and-forget-it process.

## ADVANCED FEATURES

Titan SFTP Server is the most secure, scalable and fully-featured SFTP server available.

### Virtual Folders

Titan SFTP Server gives your users access to nearly unlimited data through virtual folders. Data stores on your LAN or in the cloud can be mapped into the user or group's directory space. Titan's web user interface allows easy access to files on the Titan server or on your LAN, making it simple for users working remotely to securely access all the files that they need.

### Authentication

Titan SFTP Server integrates with the directory services that you are already using - either Active Directory or LDAP\* - to simplify user management. Titan SFTP Server also supports native authentication if your organization is not using other directory services for authentication.

### Multiple Implementation Options

Titan SFTP Server is available on-premises, or as a budget-friendly Pay-As-You-Go service in the Azure, AWS or Google marketplaces. The cloud implementation of Titan SFTP Server helps you eliminate the high cost of hardware and the time and effort of hardware management.

## SYSTEM REQUIREMENTS

### Operating System

Windows Server 2016 and higher

### Processor

2 GHz Pentium® class

### Memory

8GB of RAM required

16GB RAM recommended

### Disk Space

Minimum 100MB of free space

\*Available in Titan SFTP Server - HA only