

# Secure & Compliant Managed File Transfer for Healthcare

*Powering PHI Workflow Automation  
with Titan MFT*



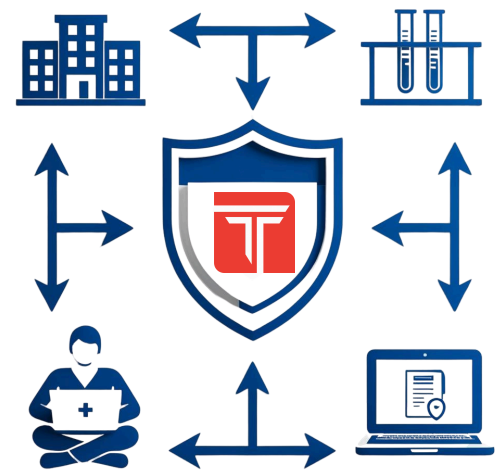
## HEALTHCARE NEEDS MANAGED, COMPLIANT, AND AUDITABLE FILE TRANSFERS

South River Technologies helps healthcare organizations automate and secure sensitive file workflows while meeting HIPAA, HITECH, and GDPR requirements. Titan MFT ensures compliance, visibility, and uninterrupted operations across clinical and administrative systems.



### How South River Technologies Supports Healthcare Organizations

- ➡ Workflow Automation for Patient Data & Billing
- ➡ PHI Visibility & Audit Readiness Across Teams
- ➡ Secure Remote Access for Distributed Staff
- ➡ Compliance-Centric Transfers (HIPAA, HITECH, GDPR)
- ➡ Lab Imaging, Claims, and EMR Interoperability



## Key BENEFITS For Healthcare IT Teams



#### HIPPA & HITECH Compliance

NSA-grade encryption (AES-256), FIPS 140-2 with policy-based transfer controls



#### Cloud-Native Deployment

Flexible cloud or hybrid installations with centralized workflow management



#### End-to-End Encryption

Data encrypted at rest and in transit with automated virus/DLP scanning



#### Role-Based Access Control

Detailed user permissions & audit trails for regulated PHI workflows



"SRT helped us reduce PHI transfer times by over 50% and strengthen compliance across distributed teams."

**IT DIRECTOR, NATIONAL LAB SERVICES  
GROUP**

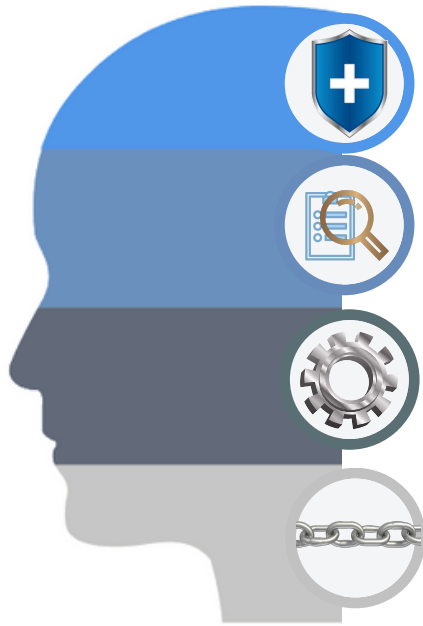
[Ready to Secure and Streamline  
Your Healthcare File Transfers?](#)



# DEEP COMPLIANCE

+

## WORKFLOW INTELLIGENCE



**Robust Security Controls:** Multi-factor authentication and NSA-grade encryption (AES-256, FIPS 140-2) — backed by Titan MFT's policy-driven transfer governance.

**Proven Auditability:** Tamper-evident logs and role-based access monitoring deliver automated, audit-ready tracking for HIPAA and HITECH compliance.

**Smart Automation:** Trigger-based workflows and file routing reduce manual effort, ensure consistency, and enforce PHI handling rules at scale.

**Seamless Integrations:** Built to connect with EMRs, LIMS, and third-party APIs — orchestrating secure data exchange across your healthcare stack.



Appointment  
Reminders



Lab & Imaging  
File Sharing



Remote Access for  
Care Teams

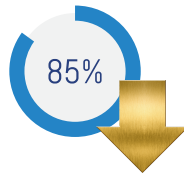
**Optimized for Real  
Healthcare Scenarios**



Billing & Claims  
Submission

HIPPA Audit  
Reporting

## PROVEN IMPACT



Reduction in PHI  
Breach Risk



Faster Data  
Transfers



Less Time  
on Audit Prep



## TRUSTED BY HEALTHCARE LEADERS WORLDWIDE

From **hospitals** and **health systems** to **labs**, **home health** providers, and **insurance** networks - Titan MFT automates secure compliant data workflows across them all.



SOUTH RIVER TECHNOLOGIES