

2019

Cornerstone MFT Server Event Tutorial: Creating User Logs

This tutorial introduces Events Management techniques for logging user activity.

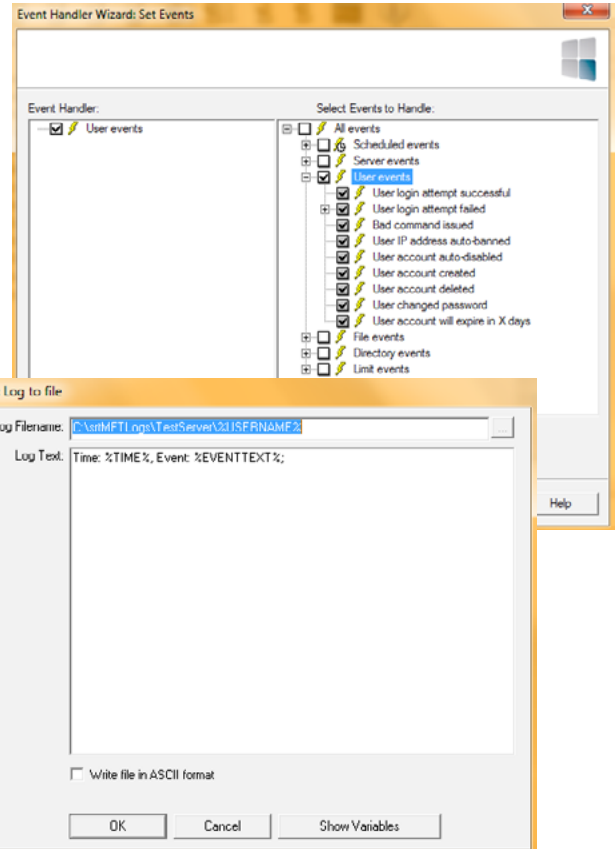
Tutorial



Event Handler Tutorial: User Logs

This tutorial is designed to introduce you to the Event Handler interface. This simple Event Handler allows you to create a custom log for each user account that will access the server. Every event caused by this user will become a custom log message written to that user's log file.

1. In the Cornerstone Administrator, expand the server in the tree pane and click Events.
2. Under the Events Handler tab, click Add.
3. Check the box beside **User Events**, which will automatically select all user events. Click Next.
4. Don't select any conditions and click Next.
5. Select the Action **Write to custom logfile**. In the Log Filename field, type **C:\srmtflogs\servername\%USERNAME%.log**, replacing "servername" with the name of this server. Cornerstone will create a log file with the name of the user in place of the %USERNAME% variable.



6. In the Log Text field, enter variables you would like the log file to include, such as time:%TIME% and event:%EVENTTEXT%. Click OK and Next.
7. Type a unique name for this Event Handler. Click Finish.

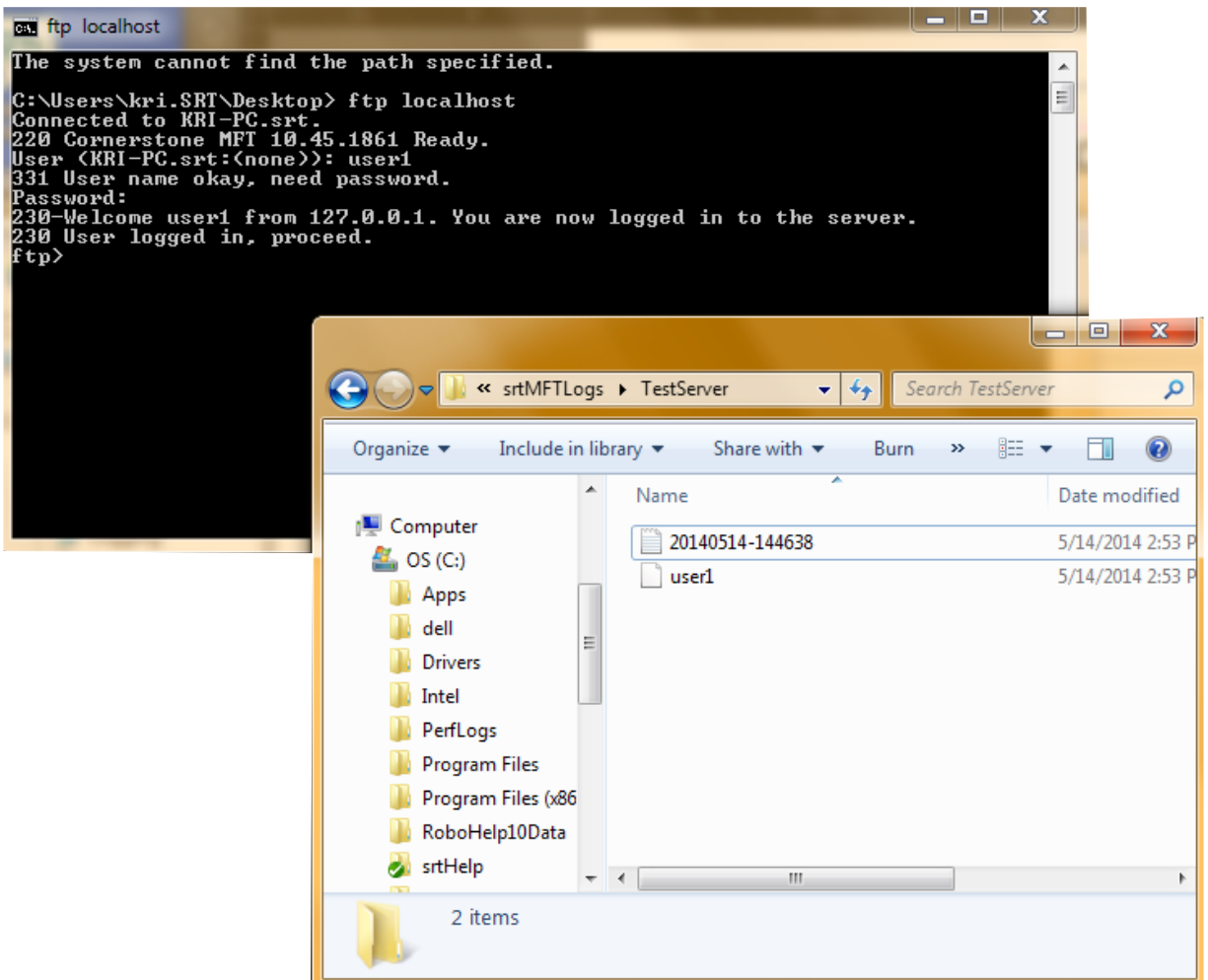
This Event Handler should appear under the Event Handler tab.

Log Example

Open a command prompt and log into the server with a test account. A file named for that user should appear in the C:\srmtflogs\servername directory.

Make sure a directory exists where you want the log file to be created; otherwise, the file

will not be created. This directory can be anywhere on your computer or network. In this example, the log file is stored in the same directory as the default location for the server log.



System Requirements

Supported Operating Systems

- Windows Server 2012, all editions, 32-bit and 64-bit
- Windows Server 2008-R2, all editions, 32-bit and 64-bit
- Windows Server 2008, all editions, 32-bit and 64-bit
- Windows Server 2016, all editions, 32-bit and 64-bit

Minimum Hardware Requirements

- 2 GHz Pentium® class processor
- 4GB of RAM is required; 8GB of RAM is recommended
- Minimum 100MB of free disk space for the application
- Minimum SVGA (800x600) resolution display is required to run the Administration console program.

Minimum Software Requirements

- Microsoft .NET Framework v4.0 is required
- Microsoft SQL Server 2005 or later is required
- Microsoft SQL Server Management Studio Express is recommended

Limitations

- Cornerstone MFT server is a multi-threaded, dynamic server solution for the Microsoft Windows operating system. While designed to handle an unlimited number of user connections and servers, like all software, Cornerstone is limited by the resources of the computer; most notably, those limitations imposed by the Windows Sockets (WINSOCK) Library.

About South River Technologies

South River Technologies (SRT) is an innovator in secure file management software. SRT software allows users to securely access, manage, and collaborate on files over the Internet, streamlining business processes to improve productivity. SRT's products enhance customers' existing applications by instantly enabling secure access and collaboration within those applications. More than 90,000 customers in 140 countries use SRT's software to make remote file access and collaboration more efficient for their customers, partners, and distributed workforce.

For more information, please visit www.southrivertech.com. South River Technologies, Cornerstone MFT, Titan FTP Server, WebDrive, and DMZedge Server are registered trademarks of South River Technologies, Inc. in the U.S. and other countries. Any information in this document about compatible products or services should not be construed in any way to suggest SRT endorsement of that product or service.

Contact Information

South River Technologies, Inc.
1910 Towne Centre Blvd
Suite 250
Annapolis, Maryland 21401
USA

Toll Free: 1-866-861-9483
Main: 443-603-0290
Fax: 410-266-1191
Corporate Web site: www.southrivertech.com
Online Support: www.srthelpdesk.com