

2018

Cornerstone MFT Server Remote Administration Setup

This guide outlines the process of connecting to and configuring a Cornerstone server for remote administration access.

QuickStart Guide



Configuring Remote Administration

Remote administration is easy to enable on Cornerstone; modifying a few simple settings will allow you to access and make changes to the server from a remote computer.

Configure Cornerstone

1. Run the Cornerstone Administrator and select your domain in the left-hand tree pane.
2. Select the Remote Administration tab. Enable **Allow Remote Administration of this Domain**. Select an Administration IP Address, which will be used to connect to the server remotely. Click Apply to save these options.

At this point, your server is ready for remote administration.

Prepare Remote Computer

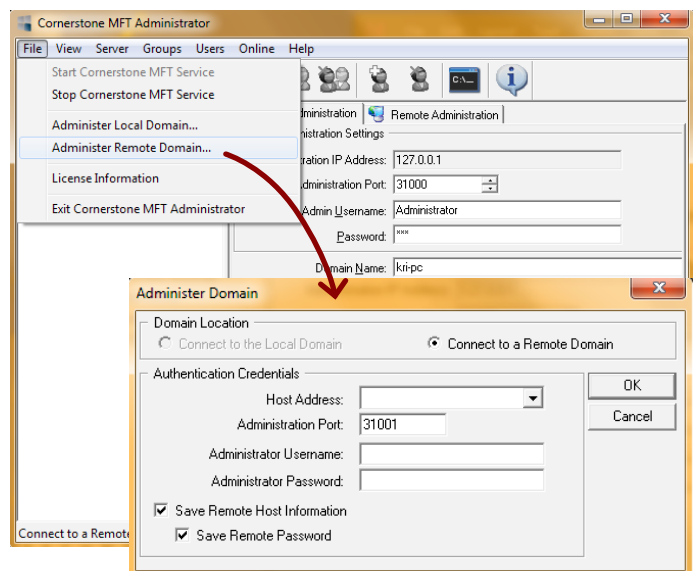
Access the computer that will be used for remote access and install the remote administration utility used to connect to this Cornerstone Server. Download the Cornerstone MFT Server installer from <http://www.webdrive.com/products/cornerstone-mft/cornerstone-mftdownload/>.

During the installation, you will be asked for the Setup Type; select **Administrator Only Installation**, which will install only the remote administration utility and not the full server.

With the remote administration utility installed, launch the Cornerstone icon on your desktop. From the File menu, select **Administer Remote Domain**.

When the dialog box opens, type the IP address, Port, and the Username and Password used to access the Cornerstone Server on the remote computer.

The Remote Administration utility will connect to the remote Cornerstone computer. You should then be able to perform remote administration of the server.



System Requirements

Supported Operating Systems

- Windows Server 2012, all editions, 32-bit and 64-bit
- Windows Server 2008-R2, all editions, 32-bit and 64-bit
- Windows Server 2008, all editions, 32-bit and 64-bit
- Windows Server 2016, all editions, 32-bit and 64-bit

Minimum Hardware Requirements

- 2 GHz Pentium® class processor
- 4GB of RAM is required; 8GB of RAM is recommended
- Minimum 100MB of free disk space for the application
- Minimum SVGA (800x600) resolution display is required to run the Administration console program.

Minimum Software Requirements

- Microsoft .NET Framework v4.0 is required
- Microsoft SQL Server 2005 or later is required
- Microsoft SQL Server Management Studio Express is recommended

Limitations

- Cornerstone MFT server is a multi-threaded, dynamic server solution for the Microsoft Windows operating system. While designed to handle an unlimited number of user connections and servers, like all software, Cornerstone is limited by the resources of the computer; most notably, those limitations imposed by the Windows Sockets (WINSOCK) Library.

About South River Technologies

South River Technologies (SRT) is an innovator in secure file management software. SRT software allows users to securely access, manage, and collaborate on files over the Internet, streamlining business processes to improve productivity. SRT's products enhance customers' existing applications by instantly enabling secure access and collaboration within those applications. More than 90,000 customers in 140 countries use SRT's software to make remote file access and collaboration more efficient for their customers, partners, and distributed workforce.

For more information, please visit www.southrivertech.com. South River Technologies, Cornerstone MFT, Titan FTP Server, WebDrive, and DMZedge Server are registered trademarks of South River Technologies, Inc. in the U.S. and other countries. Any information in this document about compatible products or services should not be construed in any way to suggest SRT endorsement of that product or service.

Contact Information

South River Technologies, Inc.
1910 Towne Centre Blvd
Suite 250
Annapolis, Maryland 21401
USA

Toll Free: 1-866-861-9483
Main: 443-603-0290
Fax: 410-266-1191
Corporate Web site: www.southrivertech.com
Online Support: www.srthelpdesk.com